

## V7 Monochrome

Hi-res monochrome printing

Native resolution 360 dpi

High contrast

Low level of maintenance

Integrated message editor

High print speed

Single Pass

High performances on a compact and reduced design



### CHARACTERISTICS

- Vertical native resolution 360 dpi
- High quality barcodes: GS1 standards
- Intuitive user interface
- On-screen layout preview (WYSIWYG)
- UV LED inks
- Possible remote assistance
- Possible barcode readability integration

### ADVANTAGES

- Solvent-free inks
- Flexibility in short runs and promotions
- Almost zero maintenance
- No need to stop for consumables replacement
- Instant drying



## SPECIFICATIONS

### PRINT

**Print head resolution:** 360 dpi

**Speed:** Up to 60 m / min

**Height:** 70 mm (scalable)

**Densities:** 7 levels

**Font type:** True Type™, Open Type™ fonts

**Character coding:** Unicode

**Bar codes:** GS-1 standard

EAN/UPC, ITF-14, GS1-128, GS1 Data-matrix, GS1 QR Code

**Printing of variable fields:**

User variables (customized fields)  
Automatic fields (Best before dates, shift, counters)

**Orientation: (depending on model type)**

Vertical (product - lateral side)  
Horizontal (product lid - on top)

**Encoder:**

Automatic speed calibration

### ENVIRONMENTAL

**Work environment:**

5 – 45 °C (41 – 111.3 °F)

**Protection:**

IP 52 (console)

### COMMUNICATIONS

Proprietary communications protocol  
Windows™ Driver  
Connectivity with external database  
and ERP Remote assistance

### ELECTRICS

**Power supply:**

Selectable by switch  
88-132 VAC | 176-264 VAC  
47-63 Hz, 1200 W (max)

**Inputs:**

1 x print trigger  
1 x encoder

**Outputs:**

2 x programmable  
2 x status indicators

**Communication ports:**

1 x RS-232  
1 x RS-422 / 485 / 232 (optional)  
2 x Ethernet 1Gb  
1 x USB  
1 x WiFi (optional)

### UV LED



**Printing immediately sets Useful, long life span with low maintenance Energy efficient**

Several heights available  
Instant on/off  
Safety through double activation input  
Adjustable intensity

### INKS

**Oil-based and UV LED inks - MOF**

**Colors:**

Black, Black (high contrast), Cyan, Magenta, Yellow, Others (consult)



### USER INTERFACE

15" colour touchscreen  
Selection of preview messages  
WYSIWYG  
Diagnostics  
Integrated message editor

### OPTIONS

Post-printing bar code verification,  
alarm beacons, bar code reader for  
selecting products, external hard-  
ware message selection

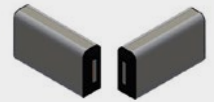
### PRINTABLE PRODUCTS

Porous, glossy, coated cardboard,  
paper, textiles, wood, plastic, metal,  
foam, EPS...

### CONFIGURATIONS

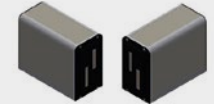
**V7 Standard 70 D:**

360 dpi  
70 mm  
DUO



**V7 Standard 140 D:**

360 dpi  
140 mm  
DUO



**Orientation options:**

Lateral - Downjet



PYMEINNOVADORA



V.L. Limitronic, S.L.  
Calle Andorra 19  
Pol. Ind. Ciudad del Transporte II  
12006 Castellón - Spain  
Tel. (+34) 964 562 199  
info@limitronic.com

**Limitronic**  
ACTITUD SIN LIMITES

limitronic.com  
linkedin.com/company/limitronic  
youtube.com/Limitronic